

Explore the Engineering Edge

IHI

THIS IS IHI

Corporate Data

Ishikawajima-Harima Heavy Industries Co., Ltd.

Company Overview

The power of the IHI group companies gathers to provide you with total solutions.

Based on our management philosophy "Using technology for the benefit of society," IHI has introduced a wide range of products to support society and industry for over 150 years. IHI's history is the history of realizing new dreams through the use of technologies. With the experience and technologies obtained through our long history at IHI, we put together all our capabilities, covering the fields of land, sea, skies, and space, to provide new products in demand in society and the world, and also new technologies in various shapes and sizes.

In search of new technological possibilities waiting to be discovered – IHI is the company for the 21st century.



Company Profile

● Founded	1853
● Capital	¥64,924 million (as of March 31, 2005)
● Employees	7,386 (as of March 31, 2005)
● Works	13
● Branches and sales offices in Japan	28
● Major affiliated companies in Japan	99 (as of July 1, 2005)
● Overseas offices	12
● Overseas subsidiaries and joint ventures	60
● Consolidated net sales	¥1,089,047 million (as of March 31, 2005)

Changes in sales volume

Year	Sales Volume (million yen)
March 2005	1,089,047
March 2004	1,047,441
March 2003	1,019,061
March 2002	1,082,402
March 2001	1,114,817
March 2000	995,063

Net Sales by Segment (for the year ended March 31, 2005)

Non consolidated net sales : ¥608,369 million

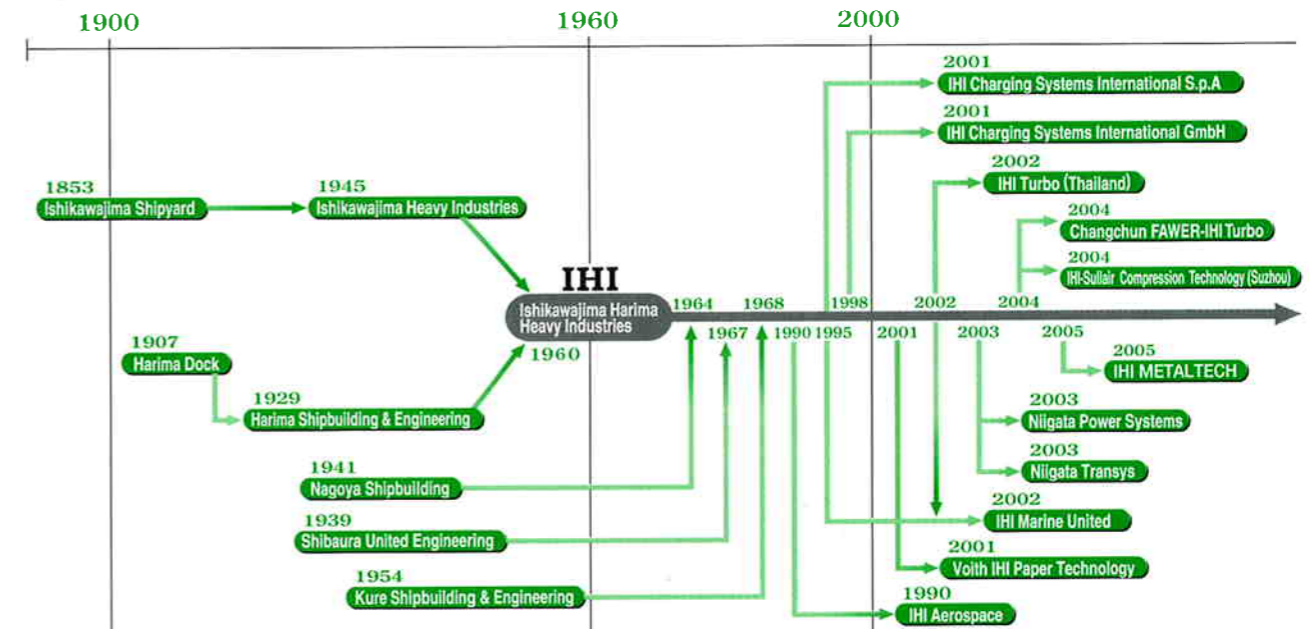
Segment	Net Sales (million yen)	Percentage
Logistics Systems and Structures Operations	¥101,725million	(17%)
Industrial Machinery Operations	¥94,885million	(16%)
Energy and Plant Operations	¥223,081million	(36%)
Aero-Engine and Space Operations	¥182,708million	(30%)
Other Operations	¥5,989million	(1%)

Consolidated net sales : ¥1,089,047 million

Segment	Net Sales (million yen)	Percentage
Logistics Systems and Structures Operations	¥176,247million	(16%)
Industrial Machinery Operations	¥124,520million	(11%)
Energy and Plant Operations	¥301,221million	(28%)
Aero-Engine and Space Operations	¥233,190million	(22%)
Shipbuilding and Offshore Operations	¥120,957million	(11%)
Other Operations	¥132,912million	(12%)

Corporate History

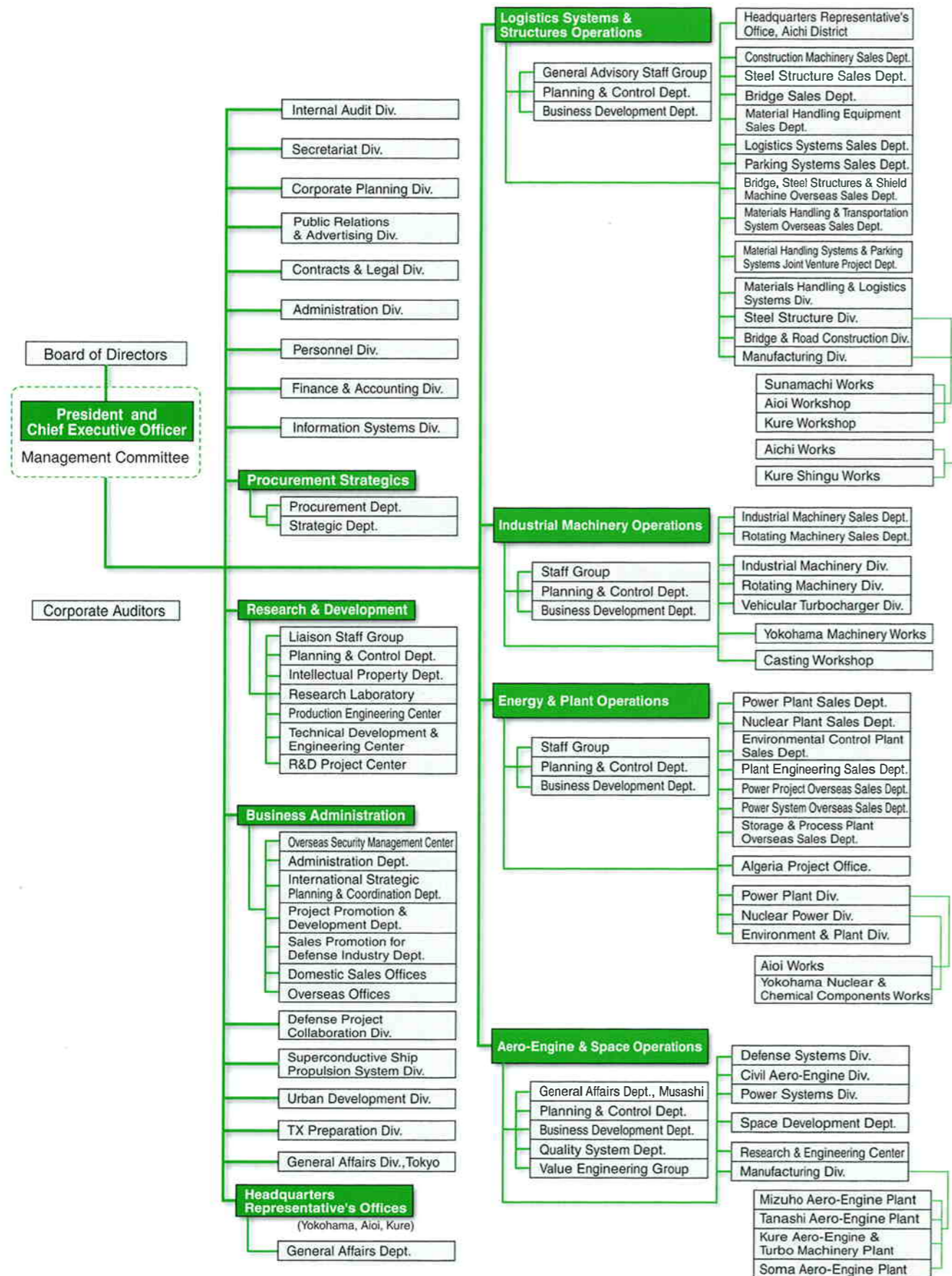
The history of IHI is the history of Japanese heavy industry. Our history started with ship manufacturing technologies which later developed into manufacturing and construction of various industrial machinery and facilities, and finally into large-scale industrial as well as social infrastructures. Numerous products of ours marking the history of heavy industry are the proof of our management philosophy "Using technology for the benefit of society."



Timeline of IHI

- 1853** Ishikawajima Shipyard is established.
- 1876** Ishikawajima Hirano Shipyard is established.
- 1889** Ishikawajima Shipbuilding & Engineering Co., Ltd. is established.
- 1907** Harima Dock Co., Ltd. is established (subject to a merger later on).
- 1924** Ishikawajima Aircraft Manufacturing Co., Ltd. is established (becomes New Tachikawa Aircraft Co., Ltd. later on).
- 1929** The automobile section spins off and Ishikawajima Automotive Works Co., Ltd. is established (becomes Isuzu Motors Limited later on through a series of mergers).
Harima Dock Co., Ltd. is renamed to Harima Shipbuilding & Engineering Co., Ltd.
- 1936** Ishikawajima Shibaura Turbine Co., Ltd. is established (for manufacturing of steam turbines for use on land) jointly with Shibaura Engineering Works Co., Ltd. (currently Toshiba Corporation).
- 1939** Shibaura United Engineering Co., Ltd. is established jointly with Shibaura Engineering Works Co., Ltd. (currently Toshiba Corporation) and United Engineering & Foundry (USA).
- 1941** Nagoya Shipbuilding Co., Ltd. is established (subject to a merger later on)
- 1945** Ishikawajima Hirano Shipyard established Ishikawajima Heavy Industries Co., Ltd. after changing its name twice.
- 1954** Kure Dock splits off from Harima Shipbuilding & Engineering Co., Ltd. and is established as Kure Shipbuilding & Engineering Co., Ltd.
- 1957** Tanashi Aero-Engine Plant opens as a factory specializing in jet engines.
- 1959** ISHIBRAS is established.
- 1960** Ishikawajima Heavy Industries Co., Ltd. and Harima Shipbuilding & Engineering Co., Ltd. merge to establish Ishikawajima-Harima Heavy Industries Co., Ltd. (IHI)
- 1961** Accompanying merger and acquisition of Ishikawajima Shibaura Turbine Co., Ltd. by Toshiba Corporation, Ishikawajima-Shibaura Seiki Co., Ltd. is established (subject to a merger later on).
Nagoya Heavy Industries Co., Ltd. is established (subject to a merger later on).
- 1962** Merges with Ishikawajima-Shibaura Seiki Co., Ltd. and Shibaura Sewing Machine Co., Ltd. (capital: 15.4 billion yen)
- 1964** Yokohama No.1 Works (currently Yokohama Machinery Works) is established as a heavy machinery plant.
Merges with Nagoya Shipbuilding Co., Ltd. and Nagoya Heavy Industries Co., Ltd. (capital: 24 billion yen).
Yokohama No.2 Works (currently IHI Marine United Yokohama Shipyard) is established as a shipbuilding plant (operation on the first ship starts on October 22).
- 1967** Merges with Shibaura United Engineering (capital: 25.872 billion yen).
- 1968** First term of Yokohama No.3 Works (currently Yokohama Nuclear & Chemical Components Works), or a heavy container works, is completed.
Merges with Kure Shipbuilding & Engineering Co., Ltd. (capital: 28.872 billion yen).
- 1973** Chita Works (currently Aichi Works) opens.
- 1981** Japanese Aero Engines Corporation is established (jointly by Mitsubishi Heavy Industries, Ltd. and Kawasaki Heavy Industries, Ltd.).
- 1983** International Aero Engines is established through development of civil aircraft engines (V2500) by Japan, England, the United States, Germany, and Italy.
- 1988** The diesel engine department spins off for establishment of Diesel United, Ltd.
- 1994** Construction of "Yokohama Engineering Center" is completed.
- 1995** Marine United is established jointly with Sumitomo Heavy Industries, Ltd.
- 1998** Construction of Soma Aero-Engine Plant as a jet engine parts plant is completed.
- 2000** IHI Aerospace Co. Ltd. established to take over the aerospace business of Nissan Motor Co., Ltd., starts operation.
- 2001** The paper manufacturing machine section spins off for establishment of Voith IHI Paper Technology Co., Ltd. jointly with Voith (Germany).
- 2002** Construction of "Yokohama Engineering Center 2" is completed. Shipbuilding & Offshore Operations becomes a separate corporation, IHI Marine United Inc.
- 2003** Taking over the "engines and turbines" business and "transportation system, vehicle, and snowplows" business, Niigata Power Systems Co., Ltd. and Niigata Transys Co., Ltd. are established.
The space development business is integrated into IHI Aerospace Co., Ltd.
- 2004** Joint machinery companies are successively established in China jointly with local manufacturers.
"Changchun FAWER-IHI Turbo Co.,Ltd." for vehicle turbochargers
"Hangzhou XIZI-IUK Parking System Co., Ltd." for mechanical parking systems (Ishikawajima Transport Machinery Co., Ltd.)
"IHI-Sullair Compression Technology (Suzhou) Co., Ltd." for general-purpose compressors
- 2005** IHI METALTECH Co., Ltd., rolling milling subsidiary, is established as a joint venture with VOEST-ALPINE Industrie-anlagenbau GmbH & Co of Austria.

IHI Organization

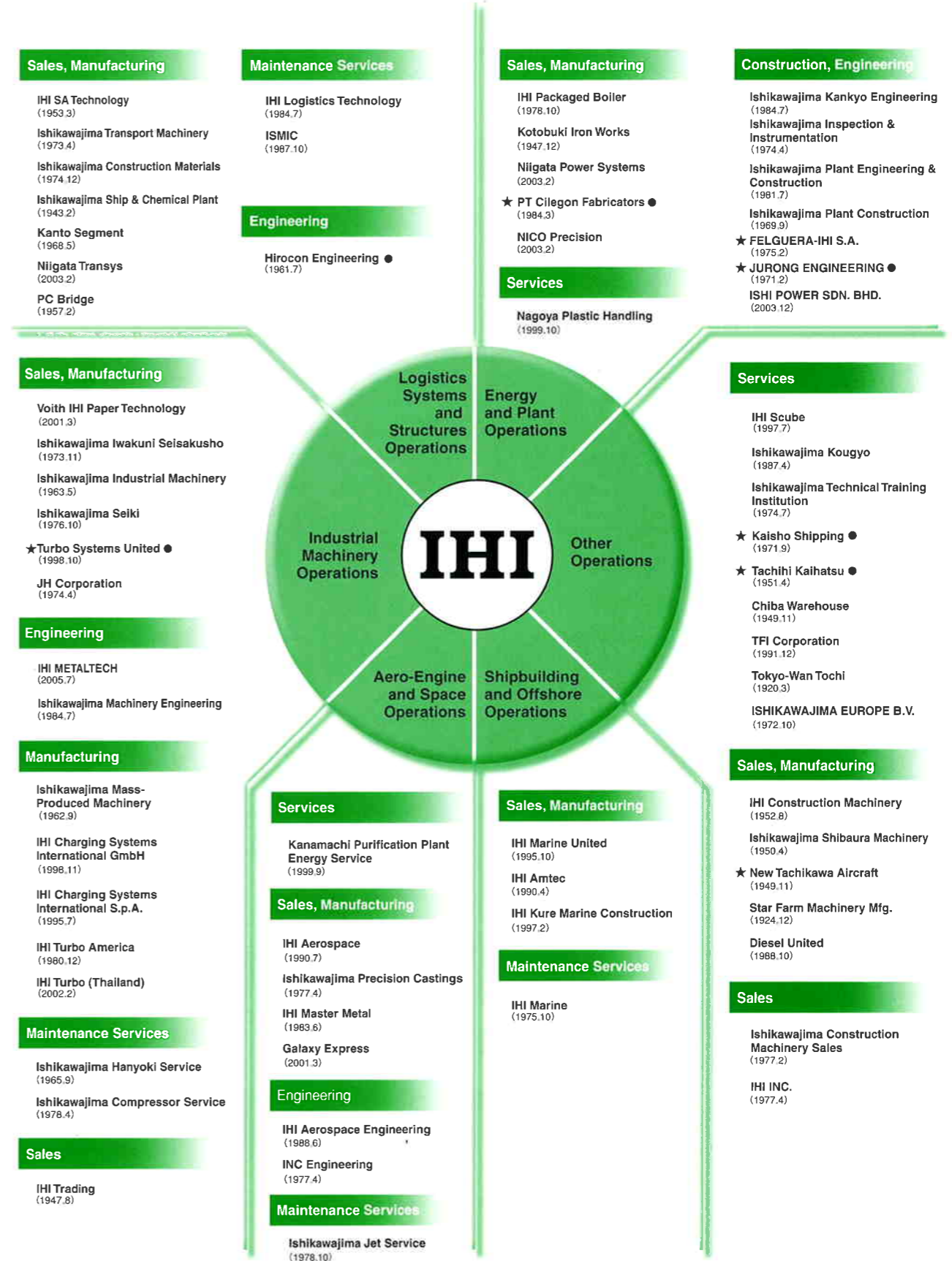


(As of August 1st, 2005)

IHI Group

Major business fields that IHI and IHI group companies are specialized in are: logistics systems and structures, industrial machinery, energy and plant, aero-engine and space, shipbuilding and offshore, and others.

By effectively using group dynamics, IHI provides not only products but also services fully covering engineering, operation, inspection, maintenance, safety, and consulting.

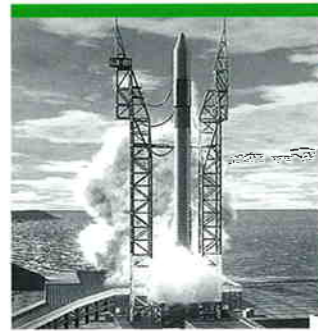


Notes: Unmarked companies are consolidated subsidiaries
 ★ : Affiliated company (● : companies accounted for by the equity method)
 () : Indicates date of foundation

(As of July 1st, 2005)

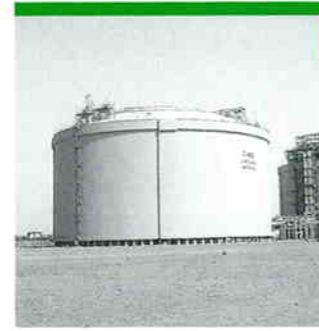
Product Table

IHI manufactures an enormous range of products. From a wide variety of plants, machinery and facilities that support industry and society, to simpler facilities closer to our daily lives, IHI is continuing to broaden this product lineup in all areas of human activity, from the earth to outer space.



Space Development

- Rocket
- Rocket propulsion systems
- Rocket control systems
- Satellite propulsion systems
- Satellite control systems
- Equipment for utilization of space environments
- Space station-related equipment
- Ground test facilities
- Ground support facilities



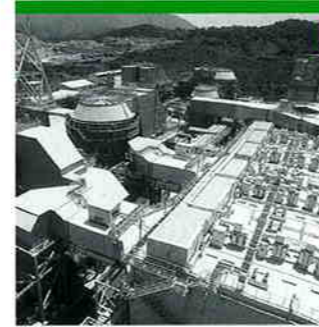
Storage Systems & Process Plants

- Storage facilities
- Oil and gas processing plants
- Chemical plants
- Seawater desalination plants
- Pharmaceutical plants
- Cement plants
- Ultrafine grinding mills
- Chemical plant equipment
- Cooling towers



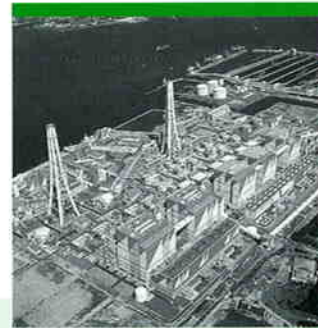
Jet Engines

- Turbofan engines
- Turboshaft engines
- Turbojet engines
- Turboprop engines
- Jet engine maintenance
- Jet engine test cells
- Jet engine parts



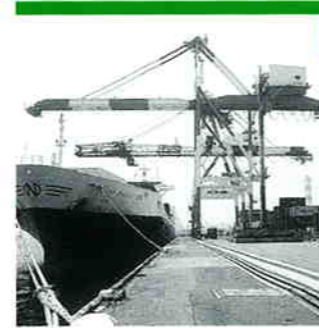
Environmental Preservation & Disaster Prevention

- Solid waste treatment systems
- Zero-emission facilities
- Air pollution prevention systems
- Wastewater treatment systems
- Noise reduction systems
- Seismic isolation floors
- Mass damper systems
- Pollution prevention ships
- Tunnel ventilation fans
- Environmental simulation facilities



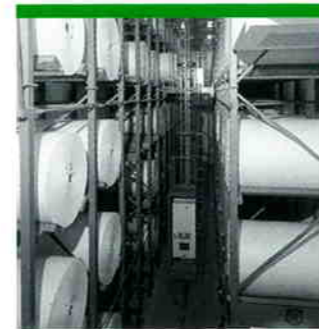
Energy Systems

- Boilers for power plants
- Industrial boilers
- Fluidized-bed combustion boilers
- Waste-heat recovery boilers
- Coal gasification combined cycle power facilities
- Components for nuclear power plants
- Radioactive waste management systems
- Gas turbine power generation systems
- Diesel engines/gas engines
- Cogeneration systems
- Wind power generation systems
- Fuel cells



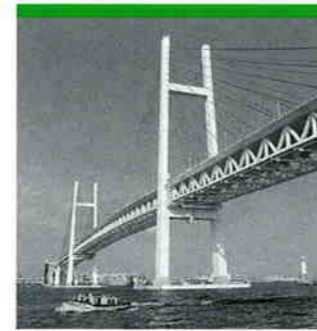
Materials Handling Equipment

- Container cranes
- Unloaders
- Stackers
- Reclaimers
- Electric overhead traveling cranes
- Jib cranes
- Floating cranes
- Conveyors



Physical Distribution Systems

- Automated warehousing systems
- Storage systems
- Conveyor transfer systems
- Sorting systems



Bridges & Steel Structures

- Bridges
- Gate equipments for rivers
- Gate equipments for dams
- Hangar dock systems
- Boarding bridges
- Floating breakwaters
- Floating bridges
- Immersed tunnels
- Hybrid caissons
- Steel structures for buildings



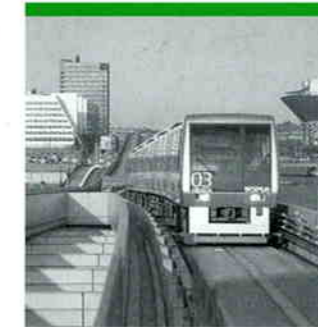
Facilities & Products for Civil Use

- Pedestrian bridges
- Moving walkways
- Ozone-based deodorizing and disinfecting equipment
- Dish and utensil washers
- Agricultural machinery
- Disaster prevention equipments
- Water-purifying equipments
- Refuse compactor
- High-temperature heating system
- Marina business



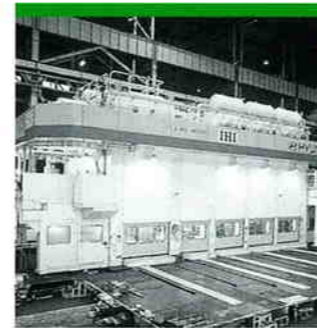
Construction Machinery

- Shield tunneling machines
- Automatic segment assembling systems
- Jib climbing cranes
- Excavators
- Materials handling machines
- Cranes
- Concrete machines
- Street sweepers
- Sludge recycle plants



Traffic Systems & Parking Systems

- Automated people mover systems
- Parking systems
- Rolling stocks
- Snowplows



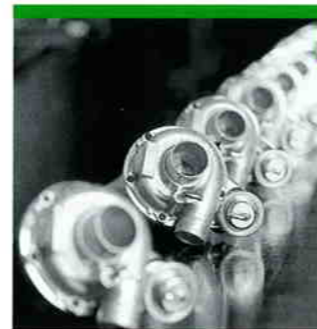
Industrial Machinery

- Rolling mills
- Industrial furnaces
- Pulp and paper production plants
- Presses
- New materials manufacturing facilities
- Rubber/plastic forming machines
- Vacuum heat treatment facilities
- Pumps
- Compressors
- Blowers
- Semiconductor and LCD panel equipment
- R&D Facilities



Control and Sensor Related Technology

- Laser radar
- Monitoring equipment
- Visualization equipment
- X-ray inspection equipment



Standard Machinery

- Turbochargers (for vehicles and ships)
- Superchargers
- Separators
- Filters
- Dewatering equipment
- Compressors
- Stepping cylinders
- Fueling equipment
- Packaged boilers
- Hoists

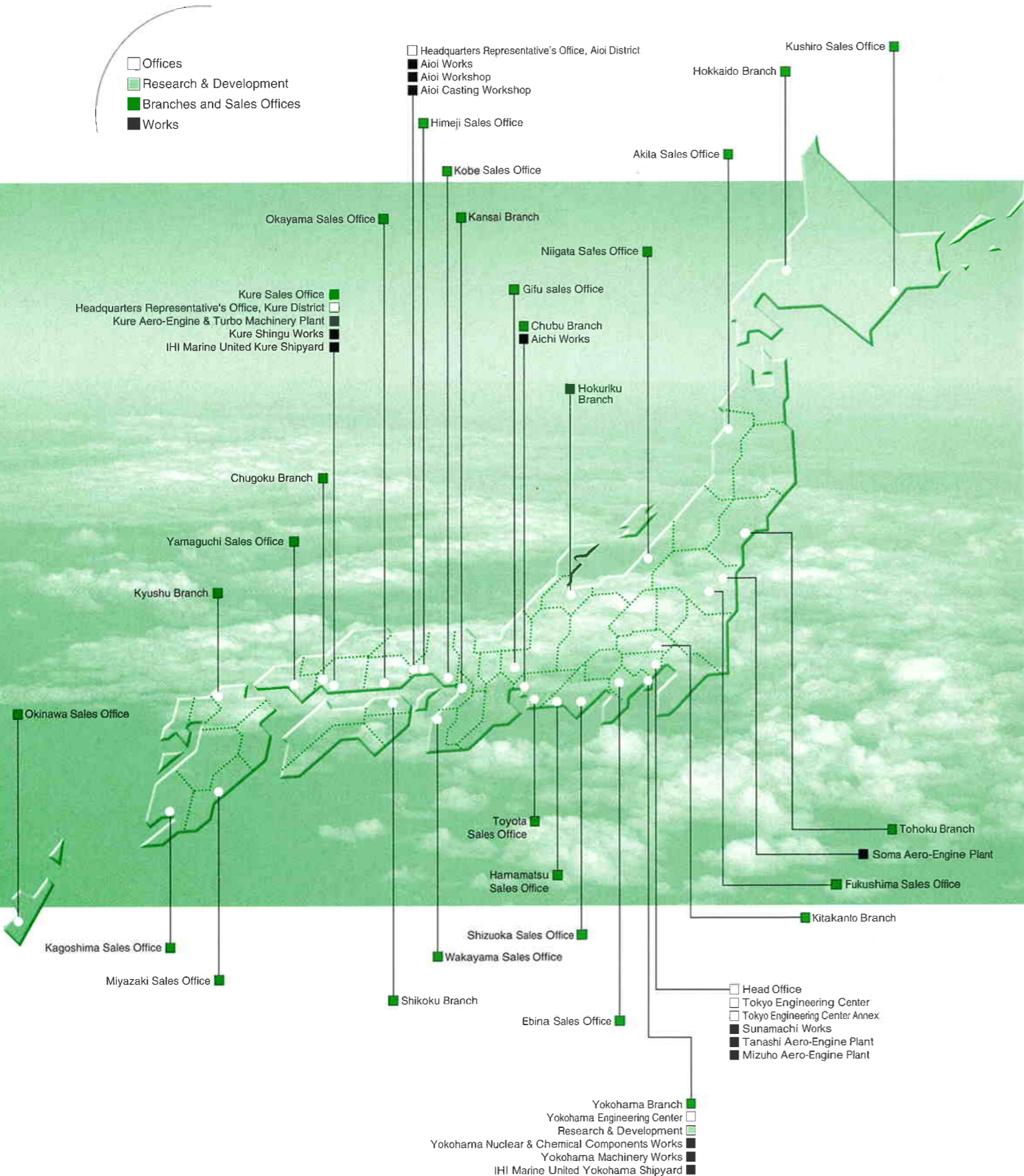


Ships & Offshore Facilities

- Oil tankers
- LNG/LPG carriers
- Container ships
- Bulk carriers
- Passenger ships & ferries
- Naval vessels & coast guard ships
- Work vessels
- Offshore development equipment
- Marine engines
- Deck cranes
- Deck machinery
- Propulsion units

Domestic Network

Domestic Offices, Research & Development, Branches and Sales Offices, Works



Offices

Head Office	Shin Ohtemachi Bldg., 2-1, Ohtemachi 2-chome, Chiyoda-ku, Tokyo 100-8182, JAPAN	Tel. +81-3-3244-5111
Tokyo Engineering Center	2-16, Toyosu 3-chome, Koto-ku, Tokyo 135-8733, JAPAN	Tel. +81-3-3534-2005
Tokyo Engineering Center Annex	1-1, Toyosu 2-chome, Koto-ku, Tokyo 135-8731, JAPAN	Tel. +81-3-3534-2005
Yokohama Engineering Center	1, Shin-Nakahara-cho, Isogo-ku, Yokohama-shi, Kanagawa 235-8501, JAPAN	Tel. +81-45-759-2002
Headquarters Representative's Office, Aioi District	5292, Aioi, Aioi-shi, Hyogo 678-0041, JAPAN	Tel. +81-791-24-2206
Headquarters Representative's Office, Kure District	2-1, Showa-cho, Kure-shi, Hiroshima 737-0027, JAPAN	Tel. +81-823-26-2105

Research & Development

Research Laboratory	1, Shin-Nakahara-cho, Isogo-ku, Yokohama-shi, Kanagawa 235-8501, JAPAN	Tel. +81-45-759-2227
Technical Development & Engineering Center	1, Shin-Nakahara-cho, Isogo-ku, Yokohama-shi, Kanagawa 235-8501, JAPAN	Tel. +81-45-759-2226
Production Engineering Center	1, Shin-Nakahara-cho, Isogo-ku, Yokohama-shi, Kanagawa 235-8501, JAPAN	Tel. +81-45-759-2225
R & D Project Center	1, Shin-Nakahara-cho, Isogo-ku, Yokohama-shi, Kanagawa 235-8501, JAPAN	Tel. +81-45-759-2224

Branches and Sales Offices

Hokkaido Branch	Gifu sales Office
Kushiro Sales Office	Kansai Branch
Tohoku Branch	Wakayama Sales Office
Akita Sales Office	Kobe Sales Office
Fukushima Sales Office	Himeji Sales Office
Kitakanto Branch	Chugoku Branch
Yokohama Branch	Okayama Sales Office
Ebina Sales Office	Kure Sales Office
Niigata Sales Office	Yamaguchi Sales Office
Hokuriku Branch	Shikoku Branch
Chubu Branch	Kyushu Branch
Shizuoka Sales Office	Miyazaki Sales Office
Hamamatsu Sales Office	Kagoshima Sales Office
Toyota Sales Office	Okinawa Sales Office

Works

Soma Aero-Engine Plant	Aichi Works
Tanashi Aero-Engine Plant	Aioi Works
Mizuho Aero-Engine Plant	Aioi Workshop
Sunamachi Works	Aioi Casting Workshop
Yokohama Nuclear & Chemical Components Works	Kure Aero-Engine & Turbo Machinery Plant
Yokohama Machinery Works	Kure Shingu Works
IHI Marine United Yokohama Shipyard	IHI Marine United Kure Shipyard

(As of August 1st, 2005)

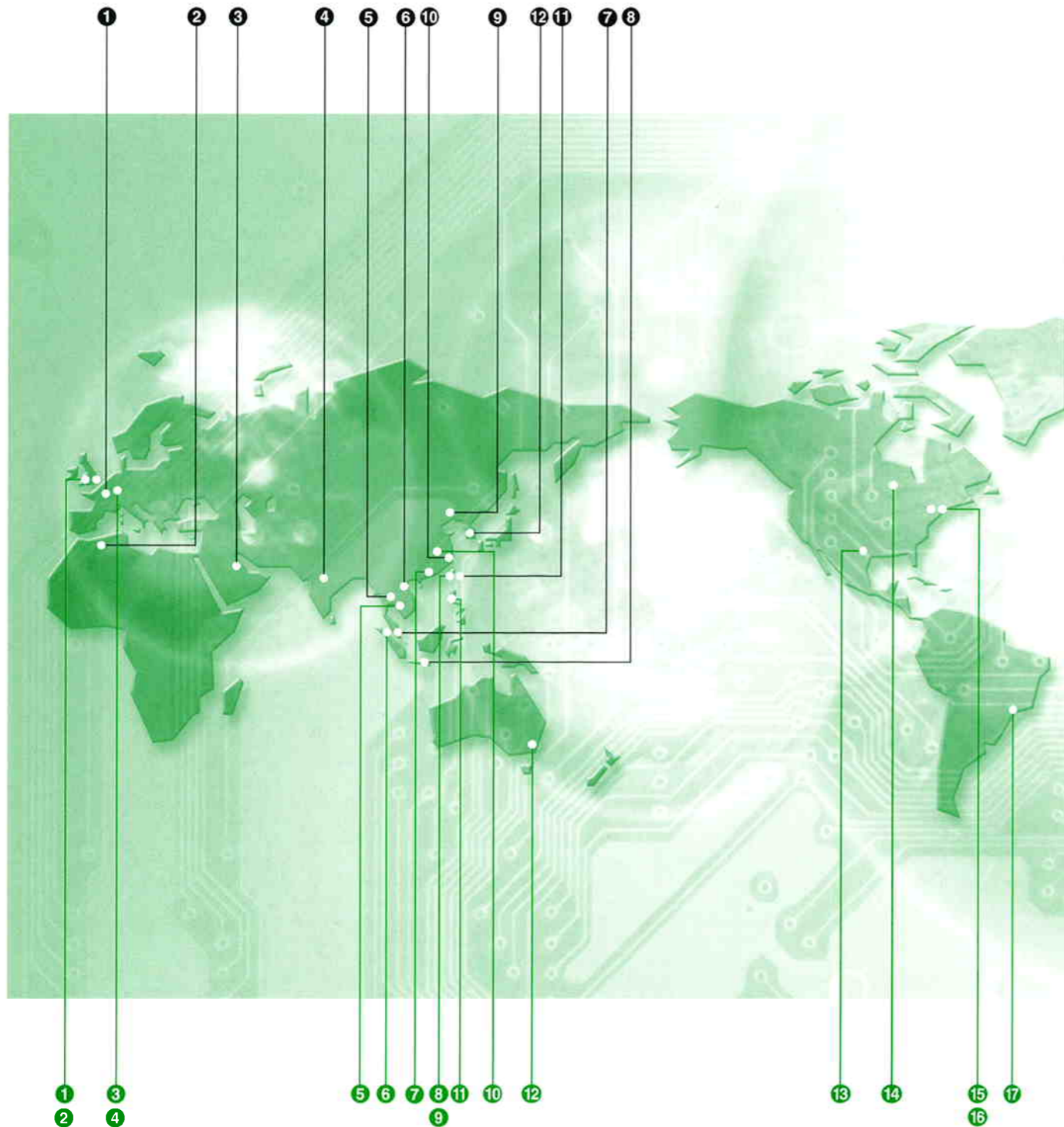
Domestic Group Companies

Aomori Plant Co., Ltd. http://www.apl-ho.co.jp/	Nuclear power facility remodeling, construction and maintenance work operations
Chiba Warehouse Co., Ltd.	Warehousing
Chita E & M Co., Ltd. http://www.ihl.co.jp/cem/	Production of refuse-derived fuel
Creative Service Co., Ltd. http://www.ihl.co.jp/cs/	Management of training facility
Diesel United, Ltd. http://www.ihl.co.jp/du/	Engineering, manufacturing and maintenance of diesel engines
Hirocon Engineering Co., Ltd. http://www.hirocon.co.jp/	River, bridge, road, and harbor planning, environmental assessment, and post-construction administration
Human Asset Support Co., Ltd.	Business and consulting operations for wage calculations, welfare, education and training, support for reemployment and dispatching labors
IHI Aerospace Co., Ltd. http://www.ihl.co.jp/ia/	Design, manufacture and sales of space equipment and defense machinery
IHI Aerospace Engineering Co., Ltd. http://www.ihl-ise.co.jp/	Design, research, and experiment sub-contracting for space development equipment
IHI Amtec Co., Ltd. http://www.ihl.co.jp/amtec/	Shipbuilding and repair
IHI Construction Machinery Ltd. http://www.ihl-kenki.co.jp/	Engineering, manufacturing and sales of construction machinery
IHI Engineering Marine Co., Ltd. http://www.ihl.co.jp/iem/	Engineering and consulting for shipbuilding
IHI Kure Marine Construction Co., Ltd.	Engineering and construction of ship hull structures
IHI Logistics Co., Ltd.	Materials, products distribution and service operations incidental to the distribution sector
IHI Logistics Technology Co., Ltd. http://www.ihlilt.co.jp/	Engineering, construction and maintenance services for physical distribution systems
Ishikawajima Machinery Engineering Co., Ltd. http://www.imec-web.co.jp/	Engineering for materials handling equipment and industrial machinery
IHI Marine Co., Ltd. http://www.ihl.co.jp/imc/	Consulting and engineering for shipbuilding, ship repair, and supply of marine equipment
IHI Marine United Inc. http://www.ihl.co.jp/ihimu/	Design, manufacture, sale, leasing, installation, repair, and maintenance of ships/vessels, boats, offshore development equipment, offshore floating structures, parts for these products, and related equipment
IHI Master Metal Co., Ltd.	Production of master ingots for precision casting
IHI METALTECH Co., Ltd.	Engineering and sales of rolling mill machinery
IHI Packaged Boiler Co., Ltd. http://www.ihl.co.jp/ibk/	Sales and maintenance service of packaged boilers
IHI SA Technology Co., Ltd.	Machining and manufacturing steel structure
IHI Scube Co., Ltd. http://www.iscube.co.jp/	Software development and solution service for information communications, machine control systems, and business systems, manufacturing of hardware for machine control systems, management service of computer systems operations, and staffing service.
IHI Technology Service Co., Ltd. http://www.ihl.co.jp/its/	Consulting for research and development, and technical transfer
IHI Trading, Inc. http://www.ihl.co.jp/it/	Sales of various kinds of machinery
INC Engineering Co., Ltd. http://www.ihl.co.jp/inc/	Consulting, engineering and construction of noise and vibration suppressing equipment
Ishikawajima Compressor Service Co., Ltd. http://www.ihl.co.jp/icp/	Engineering, installation and maintenance of compressors and blowers
Ishikawajima Construction Machinery Sales Co., Ltd. http://ihl-ikth.co.jp/	Sales and maintenance services for construction machinery
Ishikawajima Construction Materials Co., Ltd. http://www.ikk.co.jp/	Engineering, manufacturing and installation of pre-cast concrete materials
Ishikawajima Hanyoki Service Co., Ltd. http://www.ihl.co.jp/hs/	Engineering and maintenance services for air conditioners and industrial machinery
Ishikawajima Industrial Machinery Co., Ltd. http://www.ihl.co.jp/iim/	Engineering, manufacturing and sales of industrial machinery
Ishikawajima Inspection & Instrumentation Co., Ltd. http://www.iic-hq.co.jp/	Non-destructive inspection services and manufacturing of related devices
Ishikawajima Iwakuni Selsakusho Co., Ltd. http://www.ihl.co.jp/is/index.htm	Engineering and manufacturing of industrial furnaces
Ishikawajima Jet Service Co., Ltd. http://www.ihl.co.jp/ajs/	Installation and maintenance services for gas turbines and jet engines
Ishikawajima Kankyo Engineering Co., Ltd. http://www.ihl.co.jp/ike/	Operation and maintenance services for environment control equipment
Ishikawajima Kougyo Co., Ltd.	Real estate management, insurance agent business and data processing services
Ishikawajima Mass-Produced Machinery Co., Ltd. http://www.ihl.co.jp/ihk/	Manufacturing of turbochargers and packaged compressors

Ishikawajima Plant Construction Co., Ltd. http://www.ipc-ihl.co.jp/	Engineering and construction of power plants and process plants
Ishikawajima Plant Engineering & Construction Co., Ltd. http://www.ipec-ihl.jp/	Engineering and manufacturing of chemical plant equipment
Ishikawajima Precision Castings Co., Ltd.	Engineering and manufacturing of precision casting products
Ishikawajima Selki Co., Ltd.	Engineering and manufacturing of gearing mechanisms
Ishikawajima Shibaura Machinery Co., Ltd. http://www.ihl.co.jp/ism/	Engineering and manufacturing of small-size engines and agricultural machinery
Ishikawajima Ship & Chemical Plant Co., Ltd. http://www.ihl.co.jp/isc/	Engineering and construction of ships and steel structures
Ishikawajima Technology Institute http://www.iti-a.co.jp/	Construction machinery and cranes operator training
Ishikawajima Transport Machinery Co., Ltd. http://www.iuk.co.jp/	Engineering, manufacturing and maintenance for materials handling equipment and parking systems
Ishikawajima Transport Machinery Engineering Co., Ltd.	Power hoist and small crane maintenance, repairs
Ishiko Nishiharima Service Co., Ltd.	Maintenance, management, security, and cleaning services for buildings
ISMIC CO., Ltd. http://www.ismic.co.jp/	Engineering, maintenance and repair of bridges, gates and steel structures
JH Corporation http://www.j-hayes.co.jp/	Manufacturing of industrial furnace and vacuum vapor solvent degreaser
Joy Planning Co., Ltd.	Management of sports training facility
Kanamachi Purification Plant Energy Service Co., Ltd.	Power and steam supply to Tokyo Metropolitan Government Bureau of Waterworks
Kanto Segment Co., Ltd.	Manufacturing of pre-cast concrete materials
Kinki Ishiko Co., Ltd.	Sales and maintenance of construction machinery
Kotobuki Iron Works Co., Ltd.	Manufacturing of boiler and diesel engines parts
Livecon Engineering Co., Ltd.	Engineering and supervision for construction materials
Nagoya Plastic Handling Co., Ltd.	Treatment, sorting, compression, packing and storage of other plastic container packaging materials
NICO Precision Co., Inc.	Manufacture and sale of parts for motors
Niigata Power Systems Co., Ltd. http://www.niigata-power.com/	Manufacture, sale, etc. of diesel engines for marine/power-generation/rail-traction use, gas engines, gas turbines, and "Z-peller" propulsion units
Niigata Transys Co., Ltd. http://www.niigata-transys.com/	Manufacture and sale of rolling stock, industrial vehicles, snowplows, etc., and design, manufacture, and construction of automated guideway transit
Nishi-nihon Sekkei Engineering Co., Ltd. http://www.ihl.co.jp/nns/	Engineering of ships, machinery and steel structures
Nisshin Co., Ltd.	Labor dispatch, lump-sum contract-based manufacturing, manufacturing of parts and products, contract-based item design
PC Bridge Co., Ltd. http://www.pc-bridge.co.jp/	Prestressed concrete product manufacture, sales, construction work design, execution, etc.
PC Technos Co., Ltd. http://www.pctechnos.co.jp/	Design and construction of prestressed concrete segments and structures, as well as their repair
San-Etsu Co., Ltd.	Manufacture of construction equipment, and maintenance and repair of motor vehicles and engines
Seiban Development Co., Ltd.	Real estate and management of golf courses
Shibaura Technical Service Co., Ltd.	Sales and maintenance of agricultural machinery
Shinkoh SBA Co., Ltd.	Manufacturing of ship's bridge panels
Star Farm Machinery Manufacturing Co., Ltd. http://www.star-web.jp/	Manufacturing of attachment for agricultural machinery
Takashima Giken Co., Ltd. http://www.takashima-giken.co.jp/	Developing and manufacturing, selling various (Non-Destruction) inspection machines mainly for beverage
TFI Corporation	Financing and factoring
Toho Co., Ltd.	Manufacturing of secondary concrete products
Tokyo-wan Tochi Co., Ltd. http://www.t-marina.com/	Real estate and management of marinas
Toyosu Energy Service Co., Ltd.	Supply business operations; electric power, steam, hot water, and air conditioning
Voith IHI Paper Technology Co., Ltd. http://www.voithihl.com/	Design, manufacture, sale, installation, and maintenance and repair of paper manufacturing plants

(As of August 1st, 2005)

Overseas Network



Overseas Offices

① PARIS:	17, Rue d'Orleans, 92200 Neuilly sur Seine, FRANCE TEL: +33(1)4643-1493 FAX: +33(1)4637-7869
② ALGER:	22, Rue Ali-Bedjaoui, El-Biar, Alger, ALGERIA (Mailing Address) IHI B.P.102 El-Biar, Alger, ALGERIA TEL: +213(21)92-43-99 FAX: +213(21)92-14-36
③ BAHRAIN:	Manama Centre, Entrance 1, 2nd floor, Suite No.208, Government Road, P.O.Box 5837, Manama, KINGDOM OF BAHRAIN TEL: +973-17212230 FAX: +973-17212201
④ NEW DELHI:	15th Floor, Dr.Gopal Das Bhawan, 28 Barakhamba Road, New Delhi-110001, INDIA TEL: +91(11)2332-5095 FAX: +91(11)2332-2480
⑤ BANGKOK:	8th Floor, Thaniya Building, 62 Silom Road, Bangkok 10500, THAILAND TEL: +66(2)236-3490 FAX: +66(2)236-7340
⑥ HANOI:	5th Floor, Metropole Centre 56 Ly Thai To Street, Hanoi, VIETNAM TEL: +84(4)934-5305 FAX: +84(4)934-5303
⑦ KUALA LUMPUR:	Letter Box No.52, 22nd floor, UBN Tower, 10 Jln.P.Ramlee, 50250 Kuala Lumpur, MALAYSIA TEL: +60(3)2072-1255 FAX: +60(3)2072-1418
⑧ JAKARTA:	Mid Plaza II, 17th Floor. Jl. Jendral Sudirman Kav. 10-11 Jakarta 10220 INDONESIA TEL: +62(21)-570-7701 FAX: +62(21)570-7705
⑨ BEIJING:	Room 1901, China Resources Building, No.8 Jianguomenbei Avenue, Beijing, P.C 100005, CHINA TEL: +86(10)8519-2586 FAX: +86(10)8519-2590
⑩ SHANGHAI:	15th Floor, Shanghai HSBC Tower, 101 Yincheng East Road, Pudong New Area, Shanghai, 200120 CHINA TEL: +86(21)6841-1717 FAX: +86(21)6841-1919
⑪ TAIPEI:	Room 1202, Chia Hsin Building, No.96 Section 2, Chung Shan North Road, Taipei, TAIWAN TEL: +886(2)2542-5520 FAX: +886(2)2542-4362
⑫ SEOUL:	23F Seoul Finance Center, 84 Taepyeongro 1-ga, Chung-gu, Seoul 100-768, KOREA TEL: +82(2)753-8605 FAX: +82(2)755-4772

Subsidiary Companies

① LONDON: IHI Europe Ltd.	Floor 9A, No.1 Minster Court, Mincing Lane, London EC3R 7YA, U.K. TEL: +44(20)7626-1010 FAX: +44(20)7626-0078
② LONDON: Ishikawajima Europe B.V.	Floor 9A, No.1 Minster Court, Mincing Lane, London EC3R 7YA, U.K. TEL: +44(20)7626-1010 FAX: +44(20)7626-0078
③ HEIDELBERG: IHI Charging Systems International GmbH	Haberstrasse 24, 69126 Heidelberg, GERMANY TEL: +49(6221)3096-100 FAX: +49(6221)3096-123
④ HEIDELBERG: IHI Press Technology GmbH	Haberstrasse 24, 69126 Heidelberg, GERMANY TEL: +49(6221)3096-180 FAX: +49(6221)3096-111
⑤ CHONBURI: IHI Turbo (Thailand) Co., Ltd.	Amata Nakorn Industrial Estate, 700/487 Moo 2, Tumbol Bankao Amphure Phanthong, Chonburi 20160 THAILAND TEL: +66(38)4540-53 FAX: +66(38)4540-57
⑥ KUALA LUMPUR: ISHI POWER SDN. BHD.	Lot 1106,1107 11th Floor, Wisma MPL, Jalan Raja Chulan, 60200 Kuala Lumpur, MALAYSIA TEL: +60(3)2031-3033 FAX: +60(3)2031-2033
⑦ HONG KONG: IHI (HK) Ltd.	Room 501, Soundwill Plaza, 38 Russell Street, Causeway Bay, HONG KONG TEL: +852-2522-4093 FAX: +852-2845-2497
⑧ TAIPEI: IHI Technical Consulting Co., Ltd.	Room 1202, Chia Hsin Building, No. 96 Section 2, Chung Shan North Road, Taipei, TAIWAN TEL: +886(2)2542-5520 FAX: +886(2)2542-4362
⑨ TAIPEI: IHI-Chinfong Press Engineering Co., Ltd.	No.188 Chang Shui Road, Chang Hua, TAIWAN TEL: +886(4)752-4549 FAX: +886(4)752-6890
⑩ SUZHOU: IHI-Sullair Compression Technology (Suzhou)Co., Ltd.	Building A, No.3 Yangqing Road, Suzhou Industrial Park, 215001 Jiangsu Province, CHINA TEL: +86(512)8518-8500 FAX: +86(512)8518-8511
⑪ MANILA: IHI PHILIPPINES, INC.	Room 1104, West Tower, PSE Center, Exchange Road, Ortigas Center, Pasig City, Republic of the PHILIPPINES TEL: +63(2)631-0986 FAX: +63(2)631-1962
⑫ SYDNEY: IHI Engineering Australia Pty. Ltd.	Level 8, 99 Mount Street, North Sydney, NSW 2060, AUSTRALIA TEL: +61(2)9957-4777 FAX: +61(2)9922-3638
⑬ SAN ANTONIO: IHI Southwest Technologies Inc.	6220 Culebra Road, Suite 177, San Antonio, TX, 78238-5166, U.S.A. TEL: +1(210)256-4100 FAX: +1(210)521-2311
⑭ SHELBYVILLE: IHI TURBO AMERICA Co.	Route 16 West, RR3, BOX 36, Shelbyville, IL 62565-0580, U.S.A. TEL: +1(217)774-9571 FAX: +1(217)774-3834
⑮ NEW YORK: IHI INC.	280 Park Avenue, West Building 30th Floor, New York, N.Y. 10017, U.S.A. TEL: +1(212)599-8100 FAX: +1(212)599-8111
⑯ NEW YORK: IHI Power-systems America INC.	280 Park Avenue, West Building 30th Floor, New York, N.Y. 10017, U.S.A. TEL: +1(212)599-8100 FAX: +1(212)599-8111
⑰ RIO DE JANEIRO: Ishikawajima-Harima Sul-America Ltda.	Av. Presidente Antonio Carlos, 607-Sobreloja-Centro-Rio de Janeiro-RJ-BRASIL(CEP 20020-010) TEL: +55(21)2533-6671 FAX: +55(21)2533-6193

(as of August 1st, 2005)

IHI Group Facilities

Parent Company



Soma Aero-Engine Plant
 Products & services: Parts of jet engines, gas turbines and space development equipment
 Certificates: JIS Q 9100 (including JIS Q 9001/ISO 9001), ISO 14001 and Air Agency Certificate (FAA Repair Station)



Tanashi Aero-Engine Plant
 Products & services: Parts of jet engines, gas turbines and space development equipment
 Certificates: JIS Q 9100 (including JIS Q 9001/ISO 9001), JIS Q 14001 (including ISO 14001) and ISMS



Mizuho Aero-Engine Plant
 Products & services: Assembly and overhauling of jet engines, gas turbines and space development equipment
 Certificates: JIS Q 9100 (including JIS Q 9001/ISO 9001), Air Agency Certificate (FAA Repair Station), Approval Certificate (Maintenance Organization)(EASA), ISO 14001 and ISMS



Sunamachi Works
 Products & services: Bridges, gates, steel structures, offshore structures and airport facilities
 Certificate: JIS Q 9001 and ISO 9001



Yokohama Nuclear & Chemical Components Works
 Products & services: Reactor pressure vessels, containment vessels, heat exchangers for nuclear power plants and reactors and towers for chemical plants
 Certificates: ISO 9001, ISO 14001 and ASME (N,NPT,U, U2,NA,NS,N3,S)



Yokohama Machinery Works
 Products & services: Rolling mills, presses, plastic machinery, pump and rotating machinery
 Certificates: ISO 9001 and ISO 14001



Aichi Works
 Products & services: Bridges, deck machinery, steel structures and shield tunneling machines
 Certificates: ISO 9001, ISO 14001, AISC (Cbr, F, P1) and NK



Aioi Works
 Products & services: Boilers, pressure vessels for chemical plants and prefabricated piping systems
 Certificates: ISO 9001, ISO 14001, ASME (S, U, U2)



Aioi Workshop
 Products & services: Steel structures and offshore structures
 Certificate: ISO 9001 and ISO 14001



Aioi Casting Workshop
 Products & services: Casting products for machinery
 Certificates: ISO 14001 and Casting products manufacturer (LRS, NK, DNV, CR, GL)



Kure Aero-Engine & Turbo Machinery Plant
 Products & services: Parts of gas turbine power plants, jet engines and gas turbines
 Certificates: JIS Q 9100 (including JIS Q 9001/ISO 9001), ISO 14001 and Air Agency Certificate (FAA Repair Station)



Kure Shingu Works
 Products & services: Bridges, gates, steel structures and materials handling equipment
 Certificates: ISO 9001 and ISO 14001

Affiliates



IHI Marine United Yokohama Shipyard
 Products & services: Naval vessels, cruise ships, special cargo vessels and repairing
 Certificates: ISO 9001 and ISO 14001



IHI Marine United Kure Shipyard
 Products & services: Shipbuilding, conversion and repairing
 Certificates: ISO 9001, JIS Q 9001, ISO 14001 and NK



IHI Aerospace Tomioka Plant
 Products & services: Launch vehicles, other space equipment systems and defense rocket systems
 Certificates: JIS Q 9100 (including JIS Q 9001/ISO 9001), ISO 14001 and ISMS



Ishikawajima Shibaura Machinery Matsumoto Factory
 Products & services: Lawn management machines and engines
 Certificates: ISO 9001 and ISO 14001



Ishikawajima Mass-Produced Machinery Tatsuno Works
 Products & services: Turbochargers, compressors and aircraft parts
 Certificates: DNV, CCS, QS 9000 and ISO 14001



IHI Construction Machinery Yokohama Plant
 Products & services: Mini excavators, hydraulic shovels, crawler cranes, batching plants and others
 Certificate: ISO 9001 and ISO 14001



Niigata Power Systems Ohta Plant
 Products & services: Diesel engines, gas engines, dual-fuel engines and Z-peller propulsion systems
 Certificates: ISO 9001 and ISO 14001



Niigata Transys Niigata Transcom Plant
 Products & services: Rolling stocks, automated people movers, light-rail vehicles and snow plows
 Certificate: ISO 9001



Star Farm Machinery Mfg. Chitose Works
 Products & services: Hay and grass harvesting equipment



Ishikawajima Iwakuni Seisakusho Iwakuni Works
 Products & services: Blast furnace shells and tops, vacuum furnaces, new material producing furnaces and electric arc furnaces
 Certificate: ISO 9001



Ishikawajima Industrial Machinery Motomiya Works
 Products & services: Stock preparation machinery and systems
 Certificate: ISO 9001



PT Cilegon Fabricators (INDONESIA)
 Products & services: Boilers, steel structures, container cranes and pressure vessels
 Certificates: ISO 9001 and ASME (S, U, PP)



IHI Turbo America (U.S.A.)
 Products & services: Automotive turbochargers and superchargers
 Certificate: ISO 9001 and QS 9000



IHI Turbo Thailand (THAILAND)
 Products & services: Automotive turbochargers
 Certificate: QS 9000 and ISO 14001



IHI Charging Systems International (ITALY)
 Products & services: Automotive turbochargers
 Certificates: ISO 9001, AUISO, QS 9000, VDA 6.1 and ISO/TS 16949



Jiang Su Ishi Turbo (CHINA)
 Products & services: Automotive turbochargers
 Certificate: ISO 9002

(as of August 1st, 2005)